

Infection Control  
Progress within  
Maidstone & Tunbridge  
Wells NHS Trust



Gail Locock

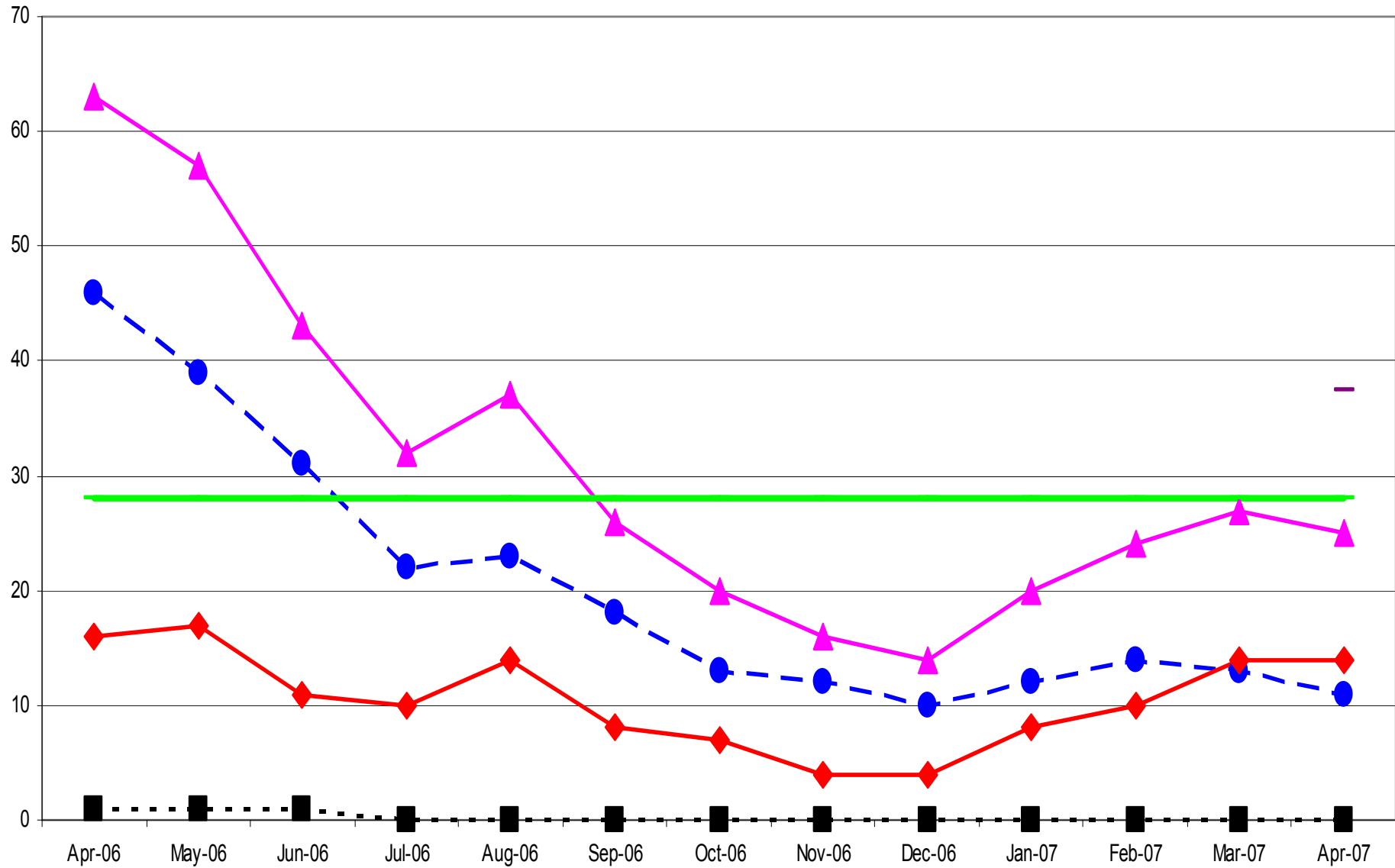
Acting Director for Infection Prevention and Control

# Outline of Presentation

- *Clostridium difficile* statistics
- MRSA Bacteraemia statistics
- Saving Lives Programme
- Clean Your Hands Campaign
- The Role of the Infection Control Link Nurse



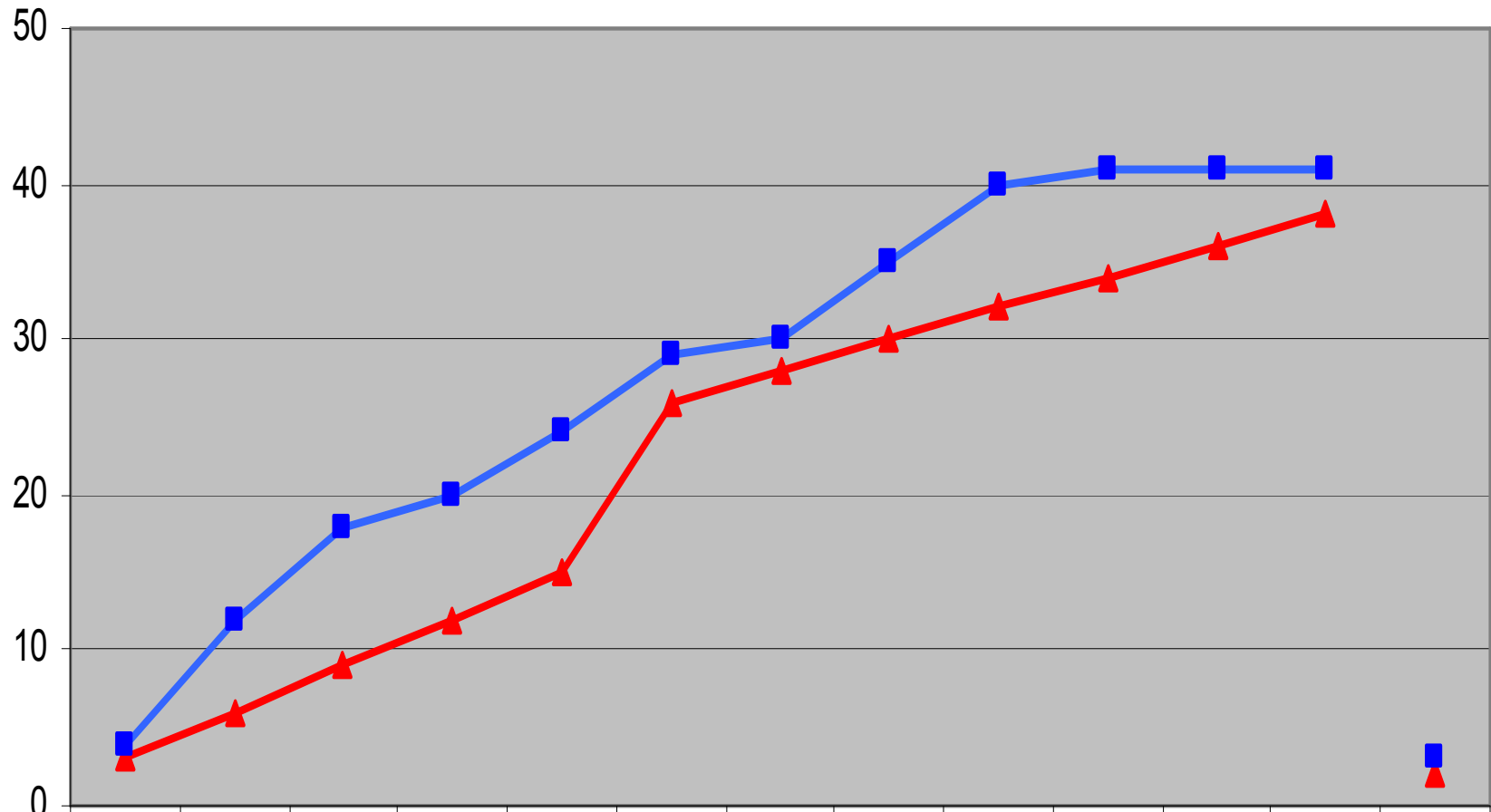
## Monthly New Clostridium Difficile Cases (All Ages) April 2006 to April 2007



## MRSA Bacteraemia vs Projected Rates (06/07)

	Total Blood Cultures Processed	Total Positive Blood Cultures (All organisms)	Total MRSA Positive Blood Cultures	Hospital Acquired	Community Acquired	Projected MRSA Positive Blood Cultures
Apr	787	112	4	3	1	3
May	857	157	8	4	4	3
June	940	149	6	3	3	3
July	943	171	2	1	1	3
Aug	842	166	4	3	1	3
Sep	863	162	5	4	1	2
Oct	976	172	1	0	1	2
Nov	907	162	5	4	1	2
Dec	951	162	5	4	1	2
Jan	1038	202	1	1	0	2
Feb	938	170	0	0	0	2
Mar	920	155	0	0	0	2
Totals	10962	1940	41	27	14	38

## MRSA Bacteraemias - Cumulative 2006/07 and 2007/08



▲	Cum. Target	3	6	9	12	15	26	28	30	32	34	36	38	2
■	Cum. MRSA	4	12	18	20	24	29	30	35	40	41	41	41	3

# Saving Lives

## 'A Delivery Programme to Reduce Healthcare Associated Infections, including MRSA'

### Self Assessment:

"Balanced Score Card"

### High Impact Interventions:

- No 1. Preventing the risk of microbial contamination
- No 2. Central venous catheter care
- No 2b. Peripheral line care
- No 2c. Renal dialysis bundle
- No 3. Preventing surgical site infection
- No 4. Care of ventilated patients
- No 5. Urinary catheter care
- No 6. Reducing the risk of infection from and the presence of *Clostridium difficile*



# Clean Your Hands Campaign

- Instigation of Clinical Champions
- Increasing awareness with all staff and the general public
- Hand hygiene audits (observational and facilities) undertaken at ward level
- Floor and wall signage
- Use of light box for technique training
- Increased resources to improve facilities
- Will review Hand Hygiene Leaflet





# ATTENTION

## Visitors

Please disinfect your hands prior to entering and before leaving this ward/department.

### HELP US TO PREVENT INFECTIONS.

Pour Softalind® into the hollow of your dry hands.  
Use the simple 6 step routine to rub the product thoroughly around your hands and wrists for 30 seconds.

Please supervise your children.



**B. BRAUN**  
SHARING EXPERTISE

307-5475-02-00





## ATTENTION

### Visitors

Please disinfect your hands prior to entering and before leaving this ward/department.

#### HELP US TO PREVENT INFECTIONS.

Pour Softalind® into the hollow of your dry hands.  
Use the simple 6 step routine to rub the product thoroughly around your hands and wrists for 30 seconds.

Please supervise your children.



**B BRAUN**  
SHEARING EXPERTISE

# Improving Link Nurse Role

- Joined up working
- Increasing their contribution
- Training
- Auditing
- Cascade information
- Two-way process



Thank You  
for  
Listening

